

# Vorlage/Template

Dreiecks Faltbox /  
Triangular Pinch Box

@annaspaperbox.de

anna's  
Paperbox  
by Anna Sposato \* annaspaperbox.de

Farbkarton:  
6" x 11¼" (15,2 x 28,5 cm)

Lange Seite falzen bei:  
4" - 5½" - 9½" - 11" (10 - 14 -  
24 - 28 cm)

Kurze Seite falzen bei:  
1½" - 5½" (4 - 14 cm)



Cardstock:  
6" x 11¼" (15,2 x 28,5 cm)

score on the long side at:  
4" - 5½" - 9½" - 11" (10 - 14 -  
24 - 28 cm)

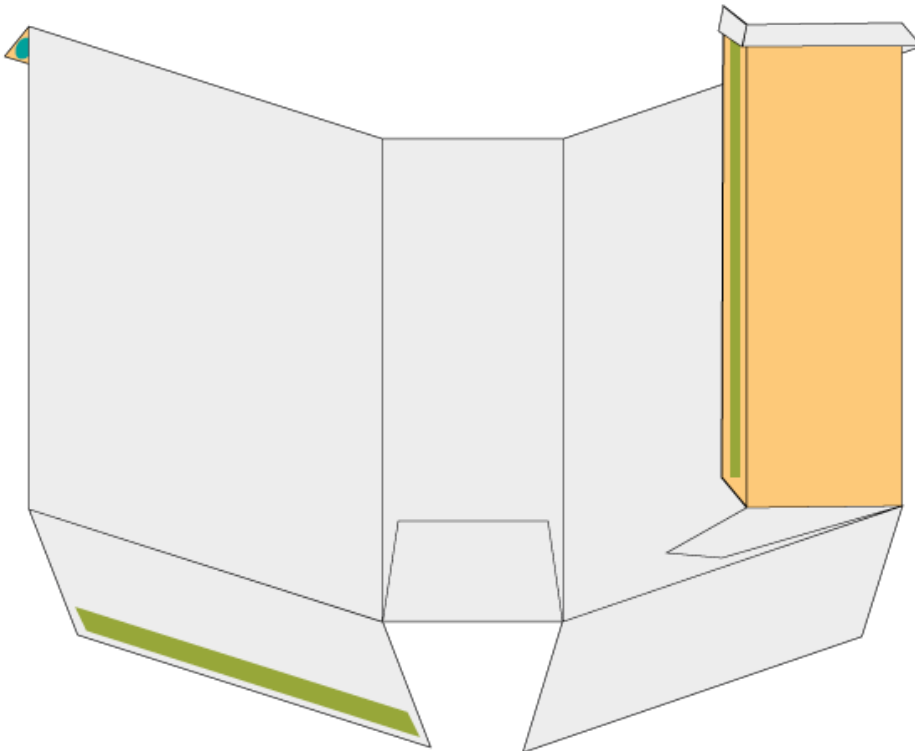
score on the short side at:  
1½" - 5½" (4 - 14 cm)



— Schneiden  
Cut

- - - Falzen  
Score





Klebefläche  
*Glue*



Glue Dot

